

## High-Mu Triode

CERAMIC-METAL PENCIL TYPE  
 FAST WARM-UP TIME STURDY COAXIAL-ELECTRODE STRUCTURE

For Use as a Low-Noise-Amplifier Tube  
 in Receiver Applications up to 1500 Mc  
 under Severe Shock and Vibration

### GENERAL DATA

#### Electrical:

Heater, for Unipotential Cathode:		
Voltage (AC or DC) . . . . .	6.3 ± 10%	volts
Current at heater volts = 6.3 . . . . .	0.225	amp
Cathode Warm-Up Time (Average) to reach 80% of operating plate current for dc plate-supply volts = 80, dc grid volts = 0, cathode resistor (ohms) = 0, load resistor (ohms) = 10, and heater volts = 6.3. . . . .		
	10	sec
Amplification Factor. . . . .	80	
Transconductance for dc plate ma. = 13, dc plate volts = 125, and cathode resistor (ohms) = 50. . . . .		
	13500	μmhos
Direct Interelectrode Capacitances: <sup>a</sup>		
Grid to plate . . . . .	2.4	μμf
Grid to cathode and heater. . . . .	4.4	μμf
Plate to cathode and heater . . . . .	0.04 max.	μμf
Heater to cathode . . . . .	2.6	μμf
Cathode to plate. . . . .	0.04 max.	μμf
Cathode to grid and heater. . . . .	7.0	μμf
Plate to grid and heater. . . . .	2.0	μμf

#### Mechanical:

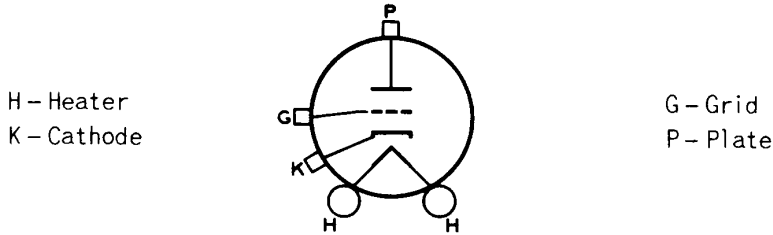
Operating Position. . . . .	Any
Dimensions. . . . .	See <i>Dimensional Outline</i>
Weight (Approx.). . . . .	0.3 oz
Sockets:	
Heater-terminals connector. . . . .	Amerac <sup>b</sup> No.1018-88 <sup>c</sup> , Grayhill <sup>d</sup> No.22-5, or equivalent
Socket for operation up to about 550 Mc (Including heater-terminals connector). . . . .	
	Jettron <sup>e</sup> No.CD7010, or equivalent
Cavities (Including heater-terminals connector). . . . .	
	J-V-M <sup>f</sup> No.D-7980 Series, Resdel <sup>g</sup> No.10 Series, or equivalent

← Indicates a change.



# 7552

Terminal Connections (See *Dimensional Outline*):



H - Heater  
K - Cathode

G - Grid  
P - Plate

→ **RADIO-FREQUENCY AMPLIFIER — Class A<sub>1</sub>**

**Maximum CCS<sup>h</sup> Ratings, Absolute-Maximum Values:**

*For altitudes up to 100,000 feet  
and frequencies up to 1500 Mc*

DC PLATE VOLTAGE. . . . .	250 max.	volts
DC GRID VOLTAGE . . . . .	-50 max.	volts
DC PLATE CURRENT. . . . .	25 max.	ma
PLATE DISSIPATION . . . . .	2.5 max.	watts
PEAK HEATER-CATHODE VOLTAGE:		
Heater negative with respect to cathode. . . . .	50 max.	volts
Heater positive with respect to cathode. . . . .	50 max.	volts
PLATE-SEAL TEMPERATURE. . . . .	225 max.	°C

**Typical CCS<sup>h</sup> Operation in Cathode-Drive Circuit:**

	<i>At 550 Mc</i>	<i>At 800 Mc</i>	<i>At 1100 Mc</i>	
DC Plate-to-Grid Voltage.	125	125	150	volts
Cathode Resistor. . . . .	50	50	50	ohms
Input-Signal-Level Range.	-70 to -20	-70 to -20	-70 to -20	dbm
DC Plate Current. . . . .	13	13	13.5	ma
Power Gain. . . . .	16.5	18	16	db
Bandwidth . . . . .	5	5	10	Mc
Noise Figure. . . . .	6.5	8.5	12.5	db

**Maximum Circuit Values:**

Grid-Circuit Resistance:  
 For fixed-bias operation. . . . . Not recommended  
 For cathode-bias operation. . . . . 0.25 max. megohm

- <sup>a</sup> Without external shield.
- <sup>b</sup> Amerac, Inc., Dunham Road, Beverly, Massachusetts.
- <sup>c</sup> For use with cavities.
- <sup>d</sup> Grayhill, Inc., 561 Hillgrove Avenue, LaGrange, Illinois.
- <sup>e</sup> Jettron Products, Inc., 56 Route 10, Hanover, N.J.
- <sup>f</sup> J-V-M Microwave Co., 9300 W. 47th St., Brookfield, Illinois. Indicated No. applies to a series of cavities covering range from 220 up to 1000 Mc and above.
- <sup>g</sup> Resdel Engineering Corp., 330 South Fair Oaks Avenue, Pasadena, California. This series of cavities covers the range from 215 to 2325 Mc.
- <sup>h</sup> Continuous Commercial Service.

→ Indicates a change.



## CHARACTERISTICS RANGE VALUES FOR EQUIPMENT DESIGN

	Note	Min.	Max.	
Heater Current. . . . .	1	0.205	0.245	amp
Direct Interelectrode Capacitances:				
Grid to plate . . . . .	-	2.0	2.7	$\mu\text{f}$
Grid to cathode . . . . .	-	3.7	4.9	$\mu\text{f}$
Plate to cathode. . . . .	-	-	0.04	$\mu\text{f}$
Heater-Cathode Leakage Current:				
Heater negative with respect to cathode. . . . .	1,2	-	30	$\mu\text{a}$
Heater positive with respect to cathode. . . . .	1,3	-	30	$\mu\text{a}$
Leakage Resistance:				
From grid to plate and cathode connected together. . . . .	1,4	100	-	megohms
From plate to grid and cathode connected together. . . . .	1,5	100	-	megohms
Reverse Grid Current. . . . .	1,6	-	0.3	$\mu\text{a}$
Emission Voltage. . . . .	7	-	4	volts
Amplification Factor. . . . .	1,8	60	100	
Transconductance. . . . .	1,8	10000	17000	$\mu\text{mhos}$
Plate Current (1) . . . . .	1,8	8.5	17.5	ma
Plate Current (2) . . . . .	1,9	-	50	$\mu\text{a}$
Plate Current (3) . . . . .	1,10	100	-	$\mu\text{a}$
Power Gain. . . . .	1,11	13	-	db
Noise Figure. . . . .	1,11	-	7.5	db
Change in Power Gain. . . . .	11,12	-	-1	db
Change in Noise Figure. . . . .	11,12	-	0.5	db
Change in Transconductance. . . . .	11,12	-	15	%

- Note 1: With 6.3 volts ac or dc on heater.
- Note 2: With 60 volts dc between heater and cathode, heater negative with respect to cathode.
- Note 3: With 60 volts dc between heater and cathode, heater positive with respect to cathode.
- Note 4: With grid 100 volts negative with respect to plate and cathode which are connected together.
- Note 5: With plate 300 volts negative with respect to grid and cathode which are connected together.
- Note 6: With dc plate voltage of 200 volts, dc grid voltage of -2 volts, grid resistor of 0.5 megohm.
- Note 7: With dc voltage on grid and plate which are connected together adjusted to produce a cathode current of 30 ma., and with 5.5 volts on heater.
- Note 8: With dc plate supply voltage of 125 volts, cathode resistor of 50 ohms, and cathode bypass capacitor of 1000  $\mu\text{f}$ .
- Note 9: With dc plate voltage of 125 volts and dc grid voltage of -5 volts.
- Note 10: With dc plate voltage of 125 volts and dc grid voltage of -2.5 volts.
- Note 11: With dc plate supply voltage of 125 volts and cathode resistor of 50 ohms in a single-tube rf amplifier of the cavity type having a bandwidth of  $5 \pm 0.5$  Mc, signal input of -70 dbm, and operating frequency of  $550 \pm 10$  Mc.
- Note 12: Reduce heater voltage to 5.7 volts. Change in Power Gain, Noise Figure, and Transconductance values from those obtained with 6.3 volts on heater will not exceed indicated values.

← Indicates a change.



## SPECIAL TESTS & PERFORMANCE DATA

### Low-Pressure Voltage-Breakdown Test:

This test (similar to MIL-E-1D, paragraph 4.9.12.1) is performed on a sample lot of tubes every 90 days. Tubes are tested in a chamber at an air pressure equivalent to an altitude of 100,000 feet. Breakdown will not occur when a 60-cycle rms voltage of 300 volts is applied between the plate cylinder and grid flange.

### Low-Frequency Vibration Performance:

This test (similar to MIL-E-1D, paragraph 4.9.19.1) is performed on a sample lot of tubes from each production run under the following conditions: Heater voltage of 6.3 volts, dc plate-supply voltage of 125 volts, cathode resistor of 50 ohms, and plate load resistor of 10,000 ohms. The tubes are vibrated in a plane perpendicular to the tube axis at 40 cycles per second at an acceleration of 10 g. The rms output voltage across the plate load resistor as a result of vibration of the tube will not exceed 100 millivolts.

At the end of this test, the tubes will not show permanent shorts or open circuits and will meet the following test limit:

Heater Current. . . . . 300 max. ma  
For conditions shown under *Characteristics Range Values*,  
*Note 1*.

### Variable-Frequency Vibration Performance:

This test (similar to MIL-E-1D, paragraph 4.9.20.3) is performed on a sample lot of tubes from each production run. Tube operating conditions are the same as for *Low-Frequency Vibration Performance*. The tubes are vibrated perpendicular to the major axis through a frequency range from 5 to 1000 cps and back. From 5 to 50 cps, the tubes are vibrated at a constant displacement of  $0.0400 \pm 0.0025$  inch. From 50 to 1000 cps, the tubes are vibrated at a constant acceleration of  $10 \pm 2$  g. Total time to complete a sweep cycle is  $10 \pm 5$  minutes. During the test, the tubes will not show an rms output voltage across the plate load resistor in excess of 150 millivolts. Each tube is vibrated for 60 seconds at the frequency which gives maximum vibrational noise output. If, at the end of 60 seconds the vibrational noise output is still increasing, the test shall continue until there is no further increase.

The rms output voltage across the plate load resistor as a result of the vibration of the tube will not exceed the specified limit at any time during the test.

At the end of this test, the tubes will not show permanent shorts or open circuits and will meet the following limits:

Heater Current. . . . . 300 max. ma  
For conditions shown under *Characteristics Range Values*,  
*Note 1*.  
Heater-Cathode Leakage Current. . . . . 60 max.  $\mu$ a  
For conditions shown under *Characteristics Range Values*,  
*Notes 1,3*.

→ Indicates a change.



## Shock Test:

This test (similar to MIL-E-ID, paragraph 4.9.20.5) is performed on a sample lot of tubes from each production run. Tubes are held rigid and are subjected in three different positions to an impact acceleration of 500 g, 5 blows in each position.

At the end of this test, tubes will not show permanent shorts or open circuits and will meet the following limits:

Heater Current. . . . .	300 max.	ma
For conditions shown under <i>Characteristics Range Values, Note 1.</i>		
Heater-Cathode Leakage Current. . . . .	60 max.	$\mu$ a
For conditions shown under <i>Characteristics Range Values, Notes 1,3.</i>		
Low-Frequency Vibration Output. . . . .	200 max.	mv
For conditions shown above under <i>Low-Frequency Vibration Performance.</i>		
Change in Transconductance. . . . .	-20 max.	%
From initial value for conditions shown under <i>Characteristics Range Values, Notes 1,8.</i>		

## Fatigue Vibration Test:

This test (similar to MIL-E-ID, paragraph 4.9.20.6) is performed on a sample lot of tubes from each production run. Tubes are rigidly mounted and subjected to 2.5 g vibrational acceleration in two positions (XI, YI) for 32 hours each. At the end of this test, tubes will meet the limits specified for the *Shock Test*.

## Shorts and Continuity Test:

This test (similar to MIL-E-ID, paragraph 4.7.3) is performed on all tubes from each production run. Voltage applied between adjacent elements of the tube under test will be between 20 and 70 volts dc or peak ac. Plate and cathode terminals are tied together and connected to the grid terminal through the shorts test equipment. Tubes are tapped with a rubber tapper three times in each of three mutually perpendicular directions. If a short indication is obtained, the tapping cycle is repeated two times for verification. Acceptance criteria is based on the "Resistance vs. Time Duration" curve shown in paragraph 4.7.7 of MIL-E-ID, Amendment 5.

At the end of this test, the tubes will not show permanent shorts or open circuits and will meet the following limit:

Heater Current. . . . .	300 max.	ma
For conditions shown under <i>Characteristics Range Values, Note 1.</i>		

## Ceramic-Seal-Fracture Test:

This test is performed on a sample lot of tubes every 90 days. With the cathode- and plate-cylinder-supports spaced  $15/16" \pm 1/64"$ , and with the grid flange centered between these supports, the tubes will withstand gradual application of a force of 30 pounds, perpendicular to the axis of the tubes,



upon the grid flange without causing fracture of the ceramic insulation.

### Seal Strain Test:

This test (similar to MIL-E-1D, paragraph 4.9.6.3) is performed on a sample lot of tubes every 90 days. Tubes are tested by first immersing in water, having a temperature of at least 97° C for at least 15 seconds, and then immersing immediately in water at not more than 5° C for 5 seconds. After drying for 48 hours at room temperature, the tubes will meet the following test limit:

Heater Current. . . . . 300 max. ma  
For conditions shown under *Characteristics Range Values, Note 1.*

### Heater-Cycling Life Performance:

This test (similar to MIL-E-1D, paragraph 4.11.7) is performed on a sample lot of tubes from each production run. With 6.3 volts on heater and no voltage on plate or grid, the heater is cycled three minutes on and three minutes off for at least 2000 cycles.

At the end of this test, tubes will not show permanent shorts or open circuits and will meet the following limits:

Heater Current. . . . . 300 max. ma  
For conditions shown under *Characteristics Range Values, Note 1.*

Heater-to-Cathode Leakage Current . . . . . 60 max.  $\mu$ a  
For conditions shown under *Characteristics Range Values, Notes 1,3.*

Grid-to-Cathode Leakage Resistance. . . . . 50 min. megohms  
For conditions shown under *Characteristics Range Values, Notes 1,4.*

### 1-Hour Stability Life Performance:

This test (similar to MIL-E-1D, paragraph 4.11.3.1.a) is performed on a sample lot of tubes from each production run to insure that the tubes have been properly stabilized. Types are operated under the following conditions: Heater voltage of 6.3 volts, plate-supply voltage of 215 volts, and cathode resistor of 150 ohms.

At the end of 1 hour, the change in transconductance value for each tube, referred to its initial transconductance reading, will not exceed 15% of the initial value for conditions shown under *Characteristics Range Values, Notes 1,8.*

In addition, the tubes will not show permanent shorts or open circuits and will meet the following limit:

Heater Current. . . . . 300 max. ma  
For conditions shown under *Characteristics Range Values, Note 1.*

### 100-Hour Survival Life Performance:

This test (similar to MIL-E-1D, paragraph 4.11.3.1.b) is performed on a sample lot of tubes from each production run



to insure a low percentage of early inoperatives. Life-test conditions are the same as those specified for *1-Hour Stability Life Performance* except that all voltages are cycled at the rate of 110 minutes on and 10 minutes off.

At the end of 100 hours, the tubes will meet the following limits:

Transconductance . . . . . 8000 min.  $\mu$ hos  
 For conditions shown under *Characteristics Range Values, Notes 1,8.*

Plate Current (2) . . . . . 50 max.  $\mu$ a  
 For conditions shown under *Characteristics Range Values, Notes 1,9.*

In addition, the tubes will not show permanent shorts or open circuits, and will meet the following limit:

Heater Current . . . . . 300 max. ma  
 For conditions shown under *Characteristics Range Values, Note 1.*

**500- and 1000-Hour Average Life Performance:**

This test (similar to MIL-E-1D, paragraph 4.11.3.2) is performed on a sample lot of tubes from each production run to insure excellent overall performance and to guard against epidemic failures of tubes to meet any of the characteristics indicated below.

Each tube is life tested under the following conditions: Heater voltage of 6.3 volts; plate-supply voltage of 215 volts; cathode resistor of 150 ohms; heater positive with respect to cathode by 67.5 volts; and plate-seal temperature of 225° C. Heater voltage is cycled at a rate of 110 minutes on and 10 minutes off.

At the end of 500 hours, the tube will not show permanent shorts or open circuits and will be criticized for the total number of defects in the sample lot and for the number of tubes failing to meet the following limits:

Heater Current . . . . . 300 max. ma  
 For conditions shown under *Characteristics Range Values, Note 1.*

Leakage Resistance:

From grid to plate and cathode  
 connected together . . . . . 60 min. megohms

From plate to grid and cathode  
 connected together . . . . . 60 min. megohms

For conditions shown under *Characteristics Range Values, Notes 1,4, and 1,5.*

Power Gain . . . . . 12 min. db  
 For conditions shown under *Characteristics Range Values, Notes 1,11.*

Noise Figure . . . . . 8.5 max. db  
 For conditions shown under *Characteristics Range Values, Notes 1,11.*

Change in Power Gain . . . . . -1 db  
 For conditions shown under *Characteristics Range Values, Notes 1,11,12.*



# 7552

---

At the end of 1000 hours, the tube will not show permanent shorts or open circuits and will be criticized for the total number of defects in the sample lot and for the number of tubes failing to meet the following limits:

- Heater Current. . . . . 300 max. ma  
For conditions shown under *Characteristics Range Values, Note 1.*
- Power Gain. . . . . 11 min. db  
For conditions shown under *Characteristics Range Values, Notes 1, 11.*
- Noise Figure. . . . . 9.5 max. db  
For conditions shown under *Characteristics Range Values, Notes 1, 11.*

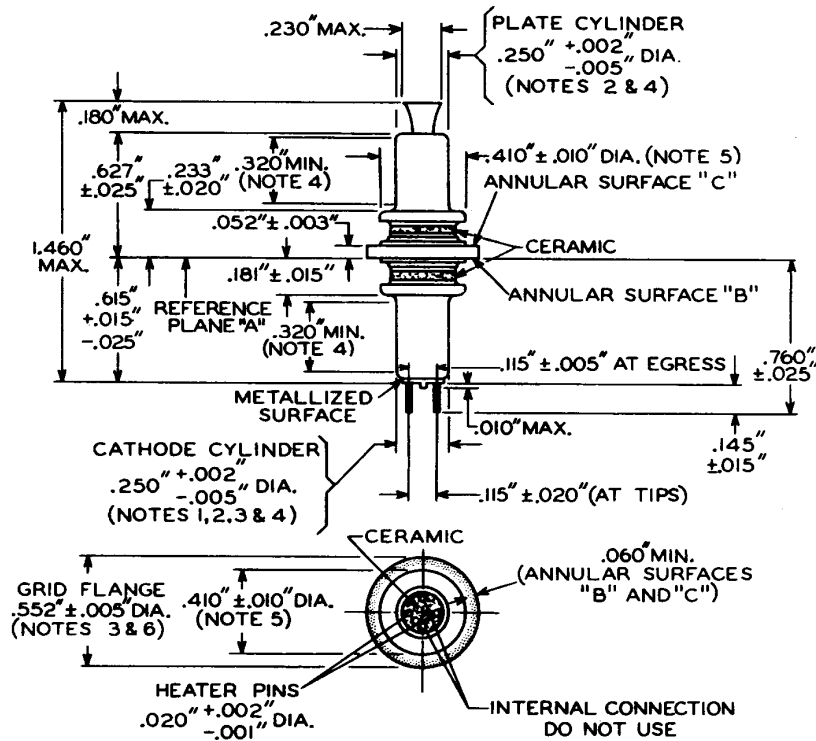
## OPERATING CONSIDERATIONS

*Connections* to the cathode cylinder, grid flange, and plate cylinder should be made by flexible spring contacts. The connectors should make firm, large-surface contact, yet must be sufficiently flexible to insure that no part of the tube is subjected to excessive strain.

The *cathode* should preferably be connected to one side of the heater. When, in some circuit designs, the heater is not connected directly to the cathode, precautions must be taken to hold the peak heater-cathode voltage to the maximum-rated values shown in the tabulated data.







92CM-10274RI

REFERENCE PLANE "A" IS DEFINED AS THAT PLANE AGAINST WHICH ANNULAR SURFACE "B" OF THE GRID FLANGE ABUTS.

ANNULAR SURFACE "B" IS ON THE SIDE OF THE GRID FLANGE TOWARD THE CATHODE CYLINDER.

ANNULAR SURFACE "C" IS ON THE SIDE OF THE GRID FLANGE TOWARD THE PLATE CYLINDER.

**NOTE 1:** WITH ANNULAR SURFACE "B" RESTING ON REFERENCE PLANE "A". THE AXIS OF THE CATHODE CYLINDER WILL BE WITHIN  $2^{\circ}$  OF A LINE PERPENDICULAR TO REFERENCE PLANE "A".

**NOTE 2:** THE AXES OF THE PLATE CYLINDER AND CATHODE CYLINDER WILL COINCIDE WITHIN 0.010".

**NOTE 3:** THE AXES OF THE CATHODE CYLINDER AND GRID FLANGE WILL COINCIDE WITHIN 0.005".

**NOTE 4:** THE DIAMETER ALONG THE 0.320" MINIMUM LENGTH IS MEASURED WITH "GO" AND "NO-GO" RING GAUGES  $G_1-1$  AND  $G_1-2$ , RESPECTIVELY.

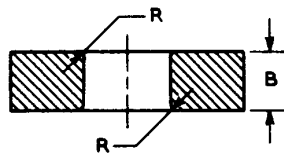
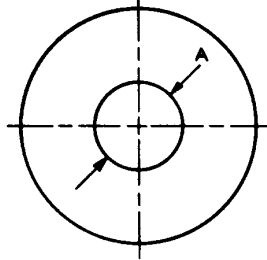
**NOTE 5:** THIS DIAMETER IS MEASURED WITH "GO" AND "NO-GO" GAUGES  $G_2-1$  AND  $G_2-2$ , RESPECTIVELY.

**NOTE 6:** THIS DIAMETER IS MEASURED WITH "GO" AND "NO-GO" GAUGES  $G_3-1$  AND  $G_3-2$ , RESPECTIVELY.



# 7552

## GAUGES

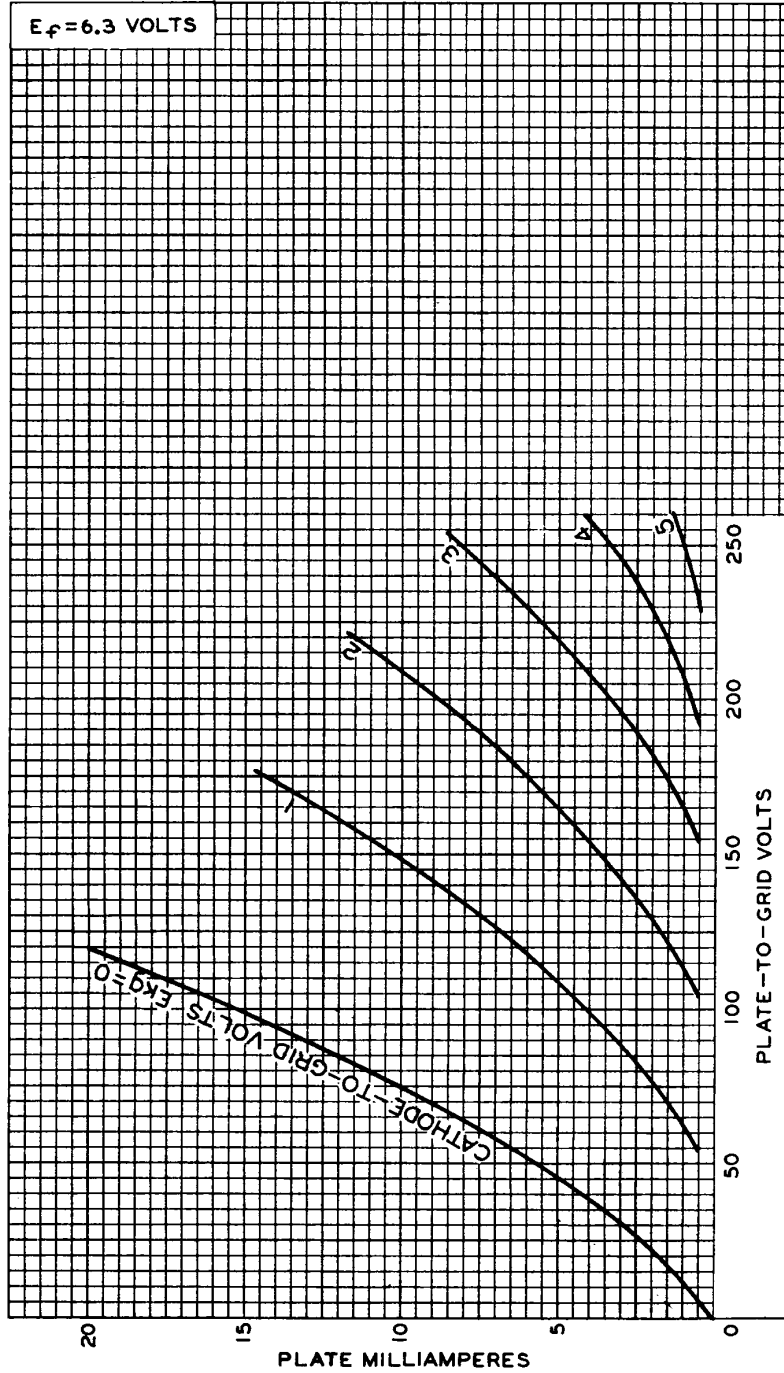


92CS-10370

Gauge	Type	Dimension		
		Diameter A	Thickness B	Radius R
G <sub>1</sub> -1	GO	0.25200" <sup>+0.00000"</sup> -0.00007"	0.320" <sup>+0.001"</sup> -0.000"	0.003" MAX.
G <sub>1</sub> -2	NO-GO	0.24500" <sup>+0.00007"</sup> -0.00000"	-	-
G <sub>2</sub> -1	GO	0.42000" <sup>+0.00000"</sup> -0.00007"	-	-
G <sub>2</sub> -2	NO-GO	0.40000" <sup>+0.00007"</sup> -0.00000"	-	-
G <sub>3</sub> -1	GO	0.55700" <sup>+0.00000"</sup> -0.00007"	-	-
G <sub>3</sub> -2	NO-GO	0.54700" <sup>+0.00007"</sup> -0.00000"	-	-



AVERAGE PLATE CHARACTERISTICS  
Cathode-Drive Service

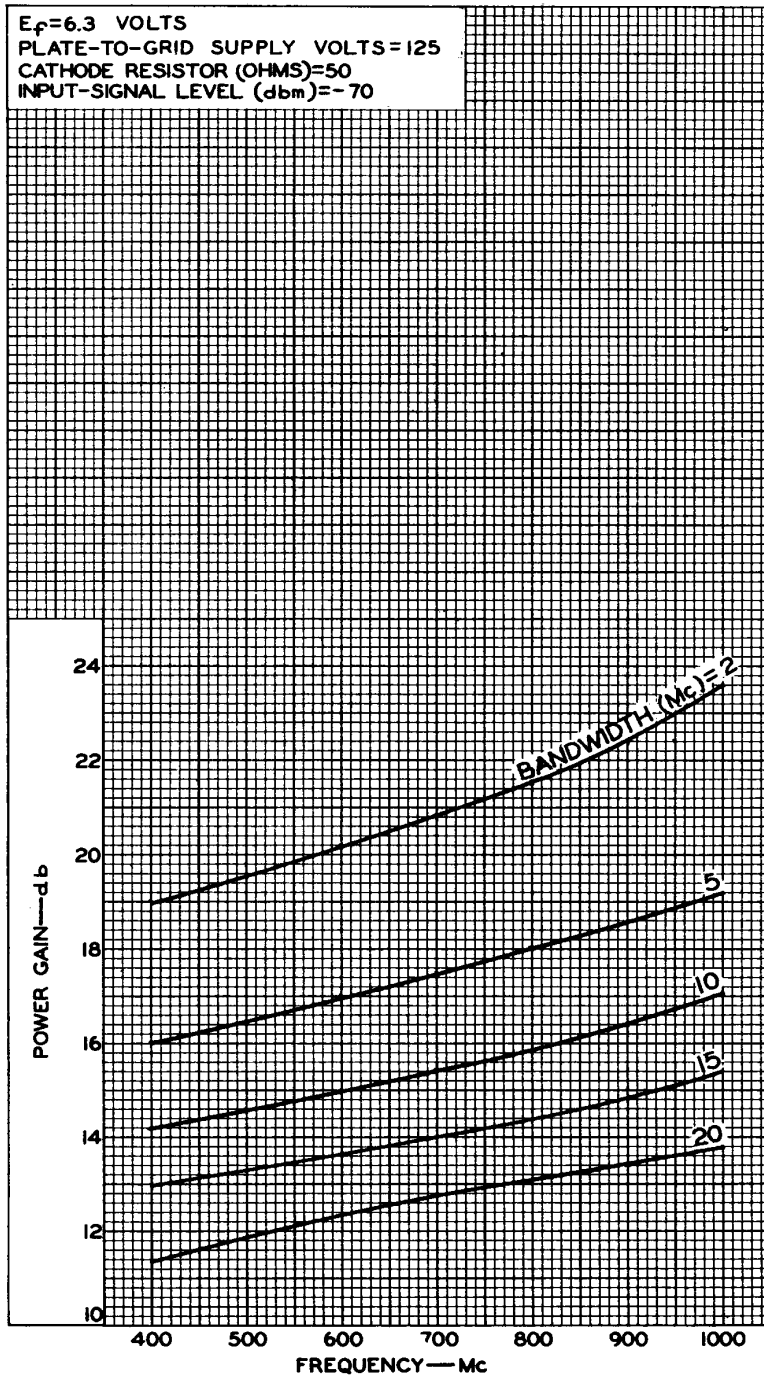


92CM-10458



# 7552

## POWER-GAIN CHARACTERISTICS Cathode-Drive Service

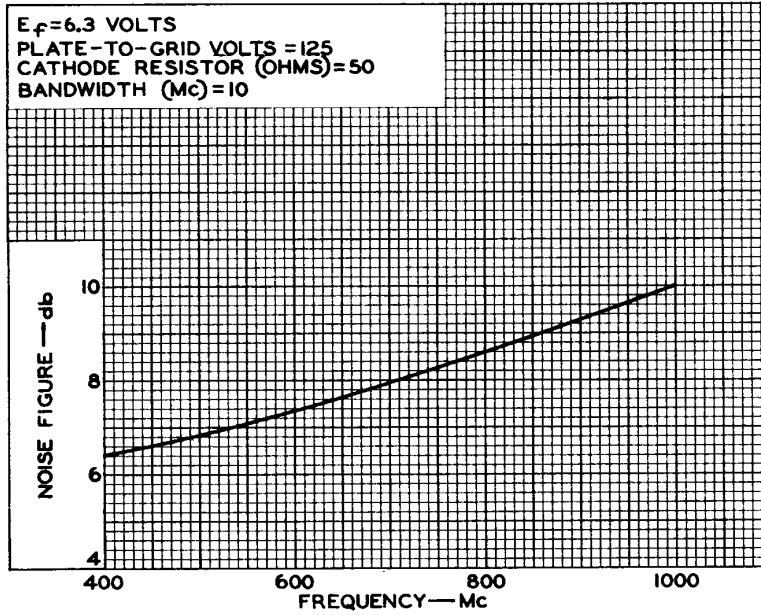


92CM-10271R1

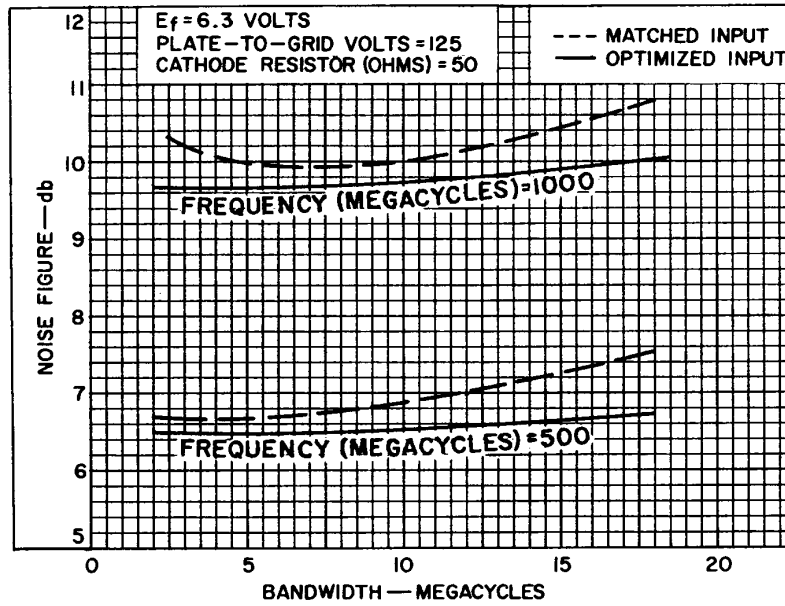
RADIO CORPORATION OF AMERICA  
Electron Tube Division  
Harrison, N. J.



## NOISE-FIGURE CHARACTERISTICS Cathode-Drive Service



92CS-10270R3

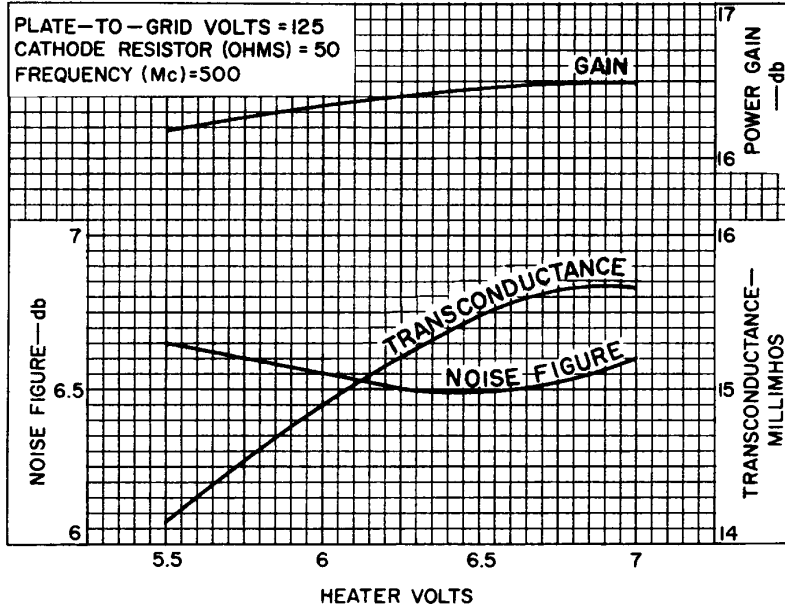


92CS-11497R1



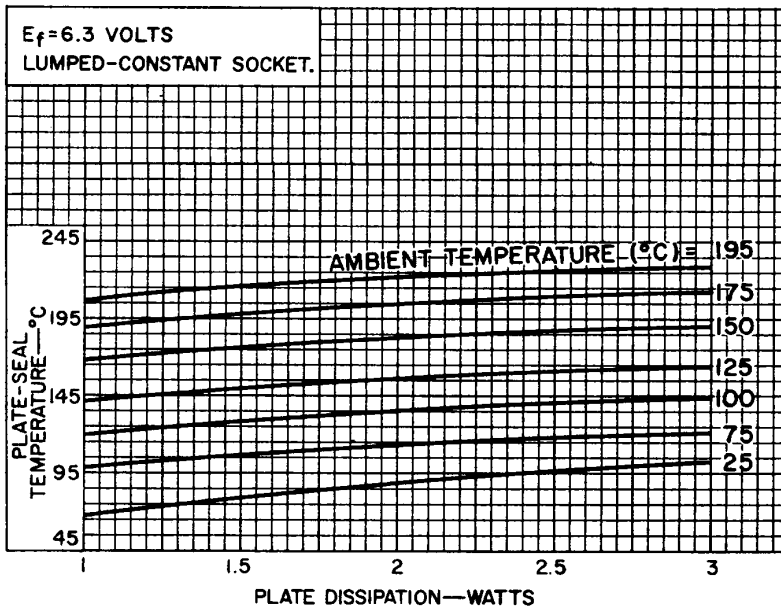
# 7552

## CHARACTERISTICS Cathode-Drive Service



92CS-11491R1

## PLATE-SEAL-TEMPERATURE CHARACTERISTICS



92CS-11488

RADIO CORPORATION OF AMERICA  
Electron Tube Division  
Harrison, N. J.

