



1947

# 1947 VACUUM-GAUGE TUBE

PIRANI TYPE

## DATA

### General:

Filament, Platinum Iridium:

Voltage (Approx.) . . . . . 10 . . . . . dc volts

Current (Varies with  
Gas Pressure) . . . . . 70-100 . . . . . ma.

Resistance between base  
pins No.1 & No.2 un-  
der vacuum better than  
 $3 \times 10^{-5}$  mm of mercury 135.8 . . . . . ohms

Maximum Overall Length (including tubulation) . . . . . 7-9/16"

Maximum Diameter . . . . . 1-3/16"

Bulb . . . . . T-9

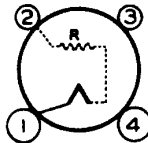
Tubulation . . . . . 7/32" Diameter Soft Glass,  
Corning Code 001 Lead

Mounting Position . . . . . Any

Base . . . . . Small-Shell Small 4-Pin

### BOTTOM VIEW

- Pin 1 - Filament
- Pin 2 - Filament
- Pin 3 - No Connection
- Pin 4 - Internal  
Connection -  
Do Not Use



R - Series Filament-  
Calibrating  
Resistor in  
base of tube

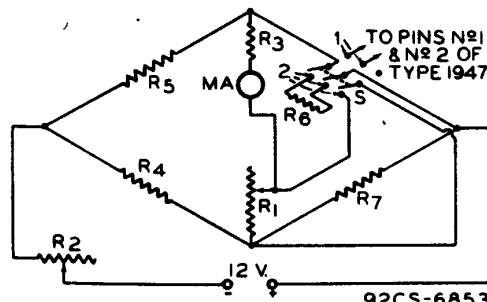
### Maximum Ratings, Absolute Values:

FILAMENT VOLTAGE . . . . . 16 max. volts

### Calibration for 1947 in Accompanying Circuit:

See curve on following sheet.

### PIRANI GAUGE BRIDGE CIRCUIT



- R1: 50 Ohms      R3 + METER: 15 Ohms      R6: 120.7 Ohms
- R2: 25 Ohms      R4 R5: 10 Ohms each      R7: 135.8 Ohms

- STEP 1: With switch S in position 2, adjust R2 so that meter reads 2.5 milliamperes.
- STEP 2: With switch S in position 1, and with dry air at atmospheric pressure in the 1947, adjust R1 so that meter reads 5.0 milliamperes.
- STEP 3: With no further adjustments and with switch S in position 1, proceed to use gauge.

JUNE 20, 1947

TUBE DEPARTMENT

TENTATIVE DATA

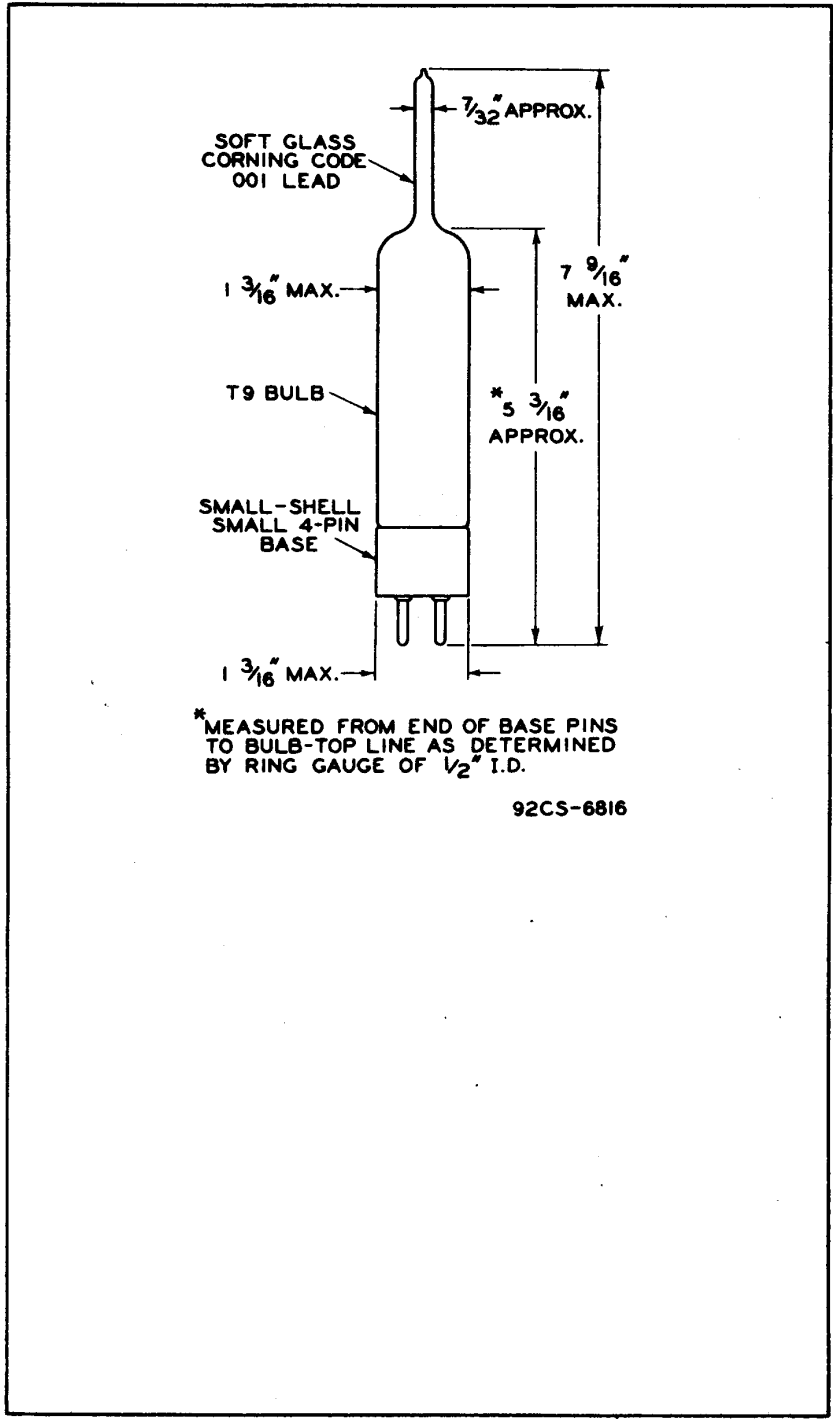
RADIO CORPORATION OF AMERICA, HARRISON, NEW JERSEY

1947



1947

# VACUUM-GAUGE TUBE



JUNE 20, 1947

TUBE DEPARTMENT  
RADIO CORPORATION OF AMERICA, HARRISON, NEW JERSEY

CE-6816

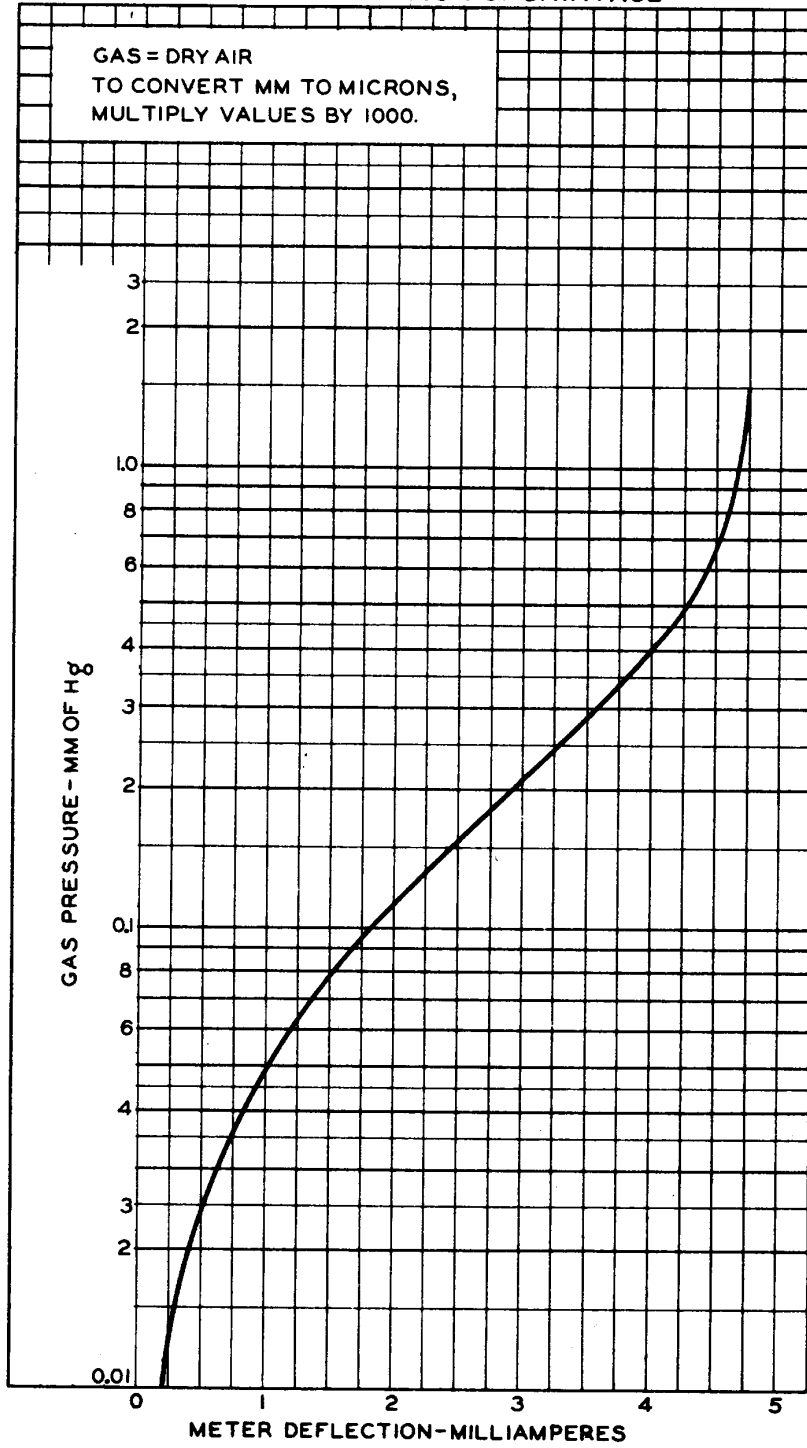


1947

1947

### CALIBRATION CURVE FOR USE WITH CIRCUIT ON DATA PAGE

GAS = DRY AIR  
TO CONVERT MM TO MICRONS,  
MULTIPLY VALUES BY 1000.



MARCH 10, 1947

TUBE DEPARTMENT  
RADIO CORPORATION OF AMERICA, HARRISON, NEW JERSEY

92CM-6849